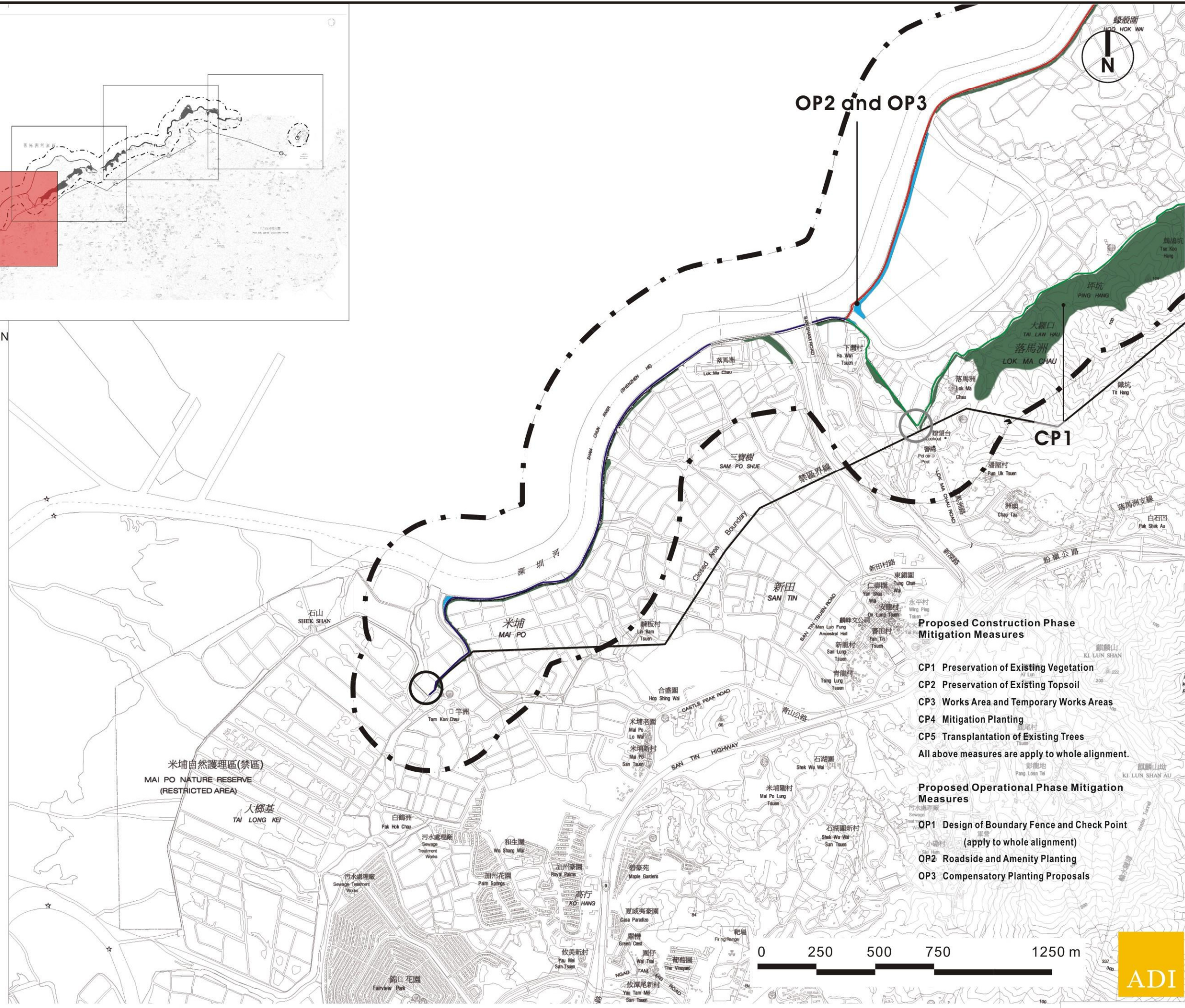


KEY PLAN



- Legend**
- 500M Study Area
  - Frontier Closed Area
  - Proposed secondary boundary fence along existing boundary patrol road
  - Proposed new boundary patrol road with primary and secondary boundary fences
  - Existing boundary fence to be removed
  - Existing check point to be removed
  - Proposed new check point
  - Existing Mature Vegetation to be preserved
  - Potential Location for Compensatory and Screening Planting
  - CP1** Mitigation Code of Recommended Mitigation Measures

- Proposed Construction Phase Mitigation Measures**
- CP1 Preservation of Existing Vegetation
  - CP2 Preservation of Existing Topsoil
  - CP3 Works Area and Temporary Works Areas
  - CP4 Mitigation Planting
  - CP5 Transplantation of Existing Trees
- All above measures are apply to whole alignment.

- Proposed Operational Phase Mitigation Measures**
- OP1 Design of Boundary Fence and Check Point (apply to whole alignment)
  - OP2 Roadside and Amenity Planting
  - OP3 Compensatory Planting Proposals

Rev	Date	Drawn	Description	Ch'kd	App'd



Mott MacDonald Hong Kong Limited  
 7th Floor  
 West Wing Office Building  
 New World Centre  
 22 Salisbury Road  
 Hong Kong  
 Tel: 2828 5757  
 Fax: 2827 1823  
 Web: www.mottmac.com.hk

Project  
 CONSTRUCTION OF A SECONDARY BOUNDARY FENCE AND NEW SECTIONS OF PRIMARY BOUNDARY FENCE AND BOUNDARY PATROL ROAD

Title  
 Recommended Landscape Mitigation Measures

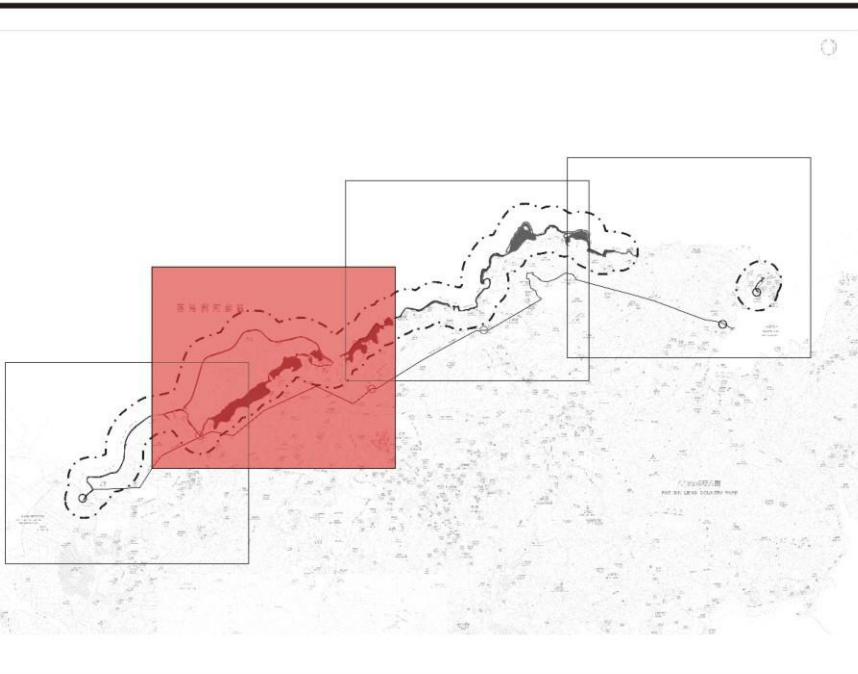
Designed	TEAM	Eng.Chk.	---
Drawn	EIK	Coordination	---
Dwg.Chk.	ELK	Approved	CJF
Scale	N.T.S.	Project	216727
Drawing No.	---	CAD File	---
		Status	



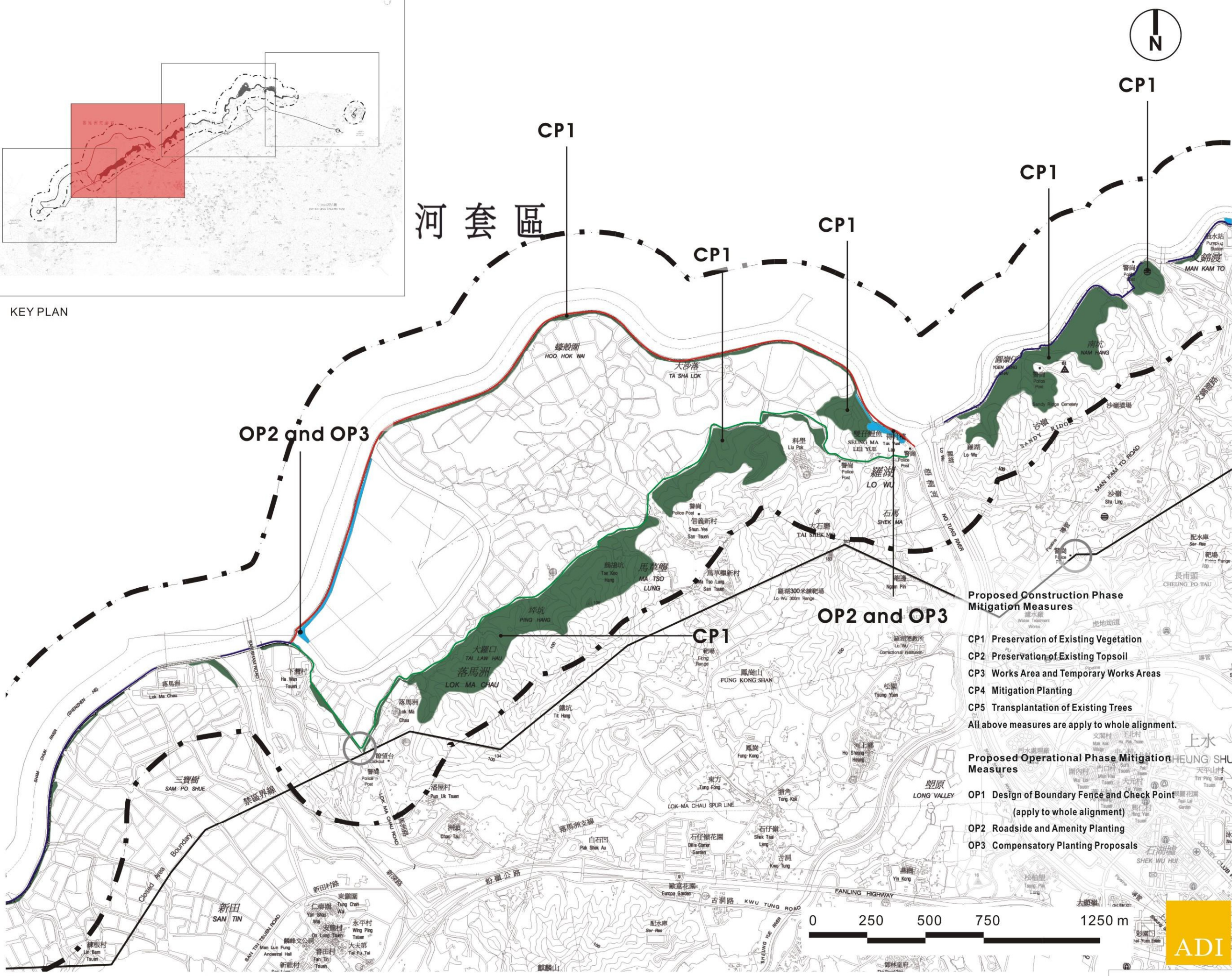
© COPYRIGHT RESERVED

This document should not be relied on or used in circumstances other than those for which it was originally prepared and for which Mott MacDonald Hong Kong Limited was commissioned. Mott MacDonald Hong Kong Limited accepts no responsibility for this document to any other party than the person by whom it was commissioned.

Figure 9-1A



KEY PLAN












CP1

CP1

OP2 and OP3

OP2 and OP3

CP1

- Legend**
-  500M Study Area
  -  Frontier Closed Area
  -  Proposed secondary boundary fence along existing boundary patrol road
  -  Proposed new boundary patrol road with primary and secondary boundary fences
  -  Existing boundary fence to be removed
  -  Existing check point to be removed
  -  Proposed new check point
  -  Existing Mature Vegetation to be preserved
  -  Potential Location for Compensatory and Screening Planting
- CP1** Mitigation Code of Recommended Mitigation Measures

- Proposed Construction Phase Mitigation Measures**
- CP1 Preservation of Existing Vegetation
  - CP2 Preservation of Existing Topsoil
  - CP3 Works Area and Temporary Works Areas
  - CP4 Mitigation Planting
  - CP5 Transplantation of Existing Trees
- All above measures are apply to whole alignment.
- Proposed Operational Phase Mitigation Measures**
- OP1 Design of Boundary Fence and Check Point (apply to whole alignment)
  - OP2 Roadside and Amenity Planting
  - OP3 Compensatory Planting Proposals

Rev	Date	Drawn	Description	Ch'kd	App'd

Client: ARCHITECTURAL SERVICES DEPARTMENT

Mott MacDonald Hong Kong Limited  
 7th Floor  
 West Wing Office Building  
 New World Centre  
 23 Salisbury Road  
 Hong Kong  
 Tel: 2828 5757  
 Fax: 2827 1823  
 Web: www.mottmac.com.hk

Project: CONSTRUCTION OF A SECONDARY BOUNDARY FENCE AND NEW SECTIONS OF PRIMARY BOUNDARY FENCE AND BOUNDARY PATROL ROAD

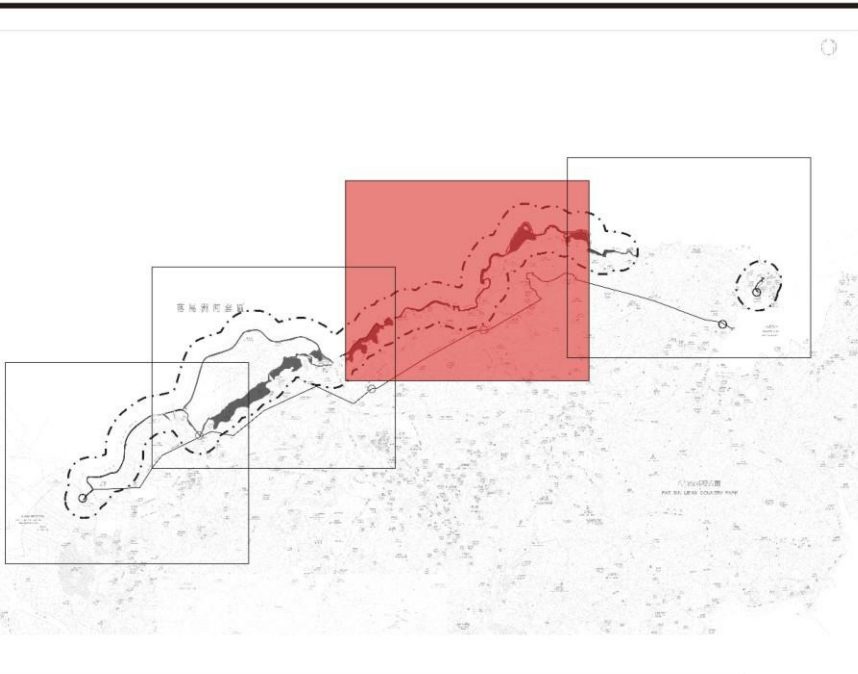
Title: Recommended Landscape Mitigation Measures

Designed	TEAM	Eng.Chk.	---
Drawn	EIK	Coordination	---
Dwg.Chk.	ELK	Approved	CJF

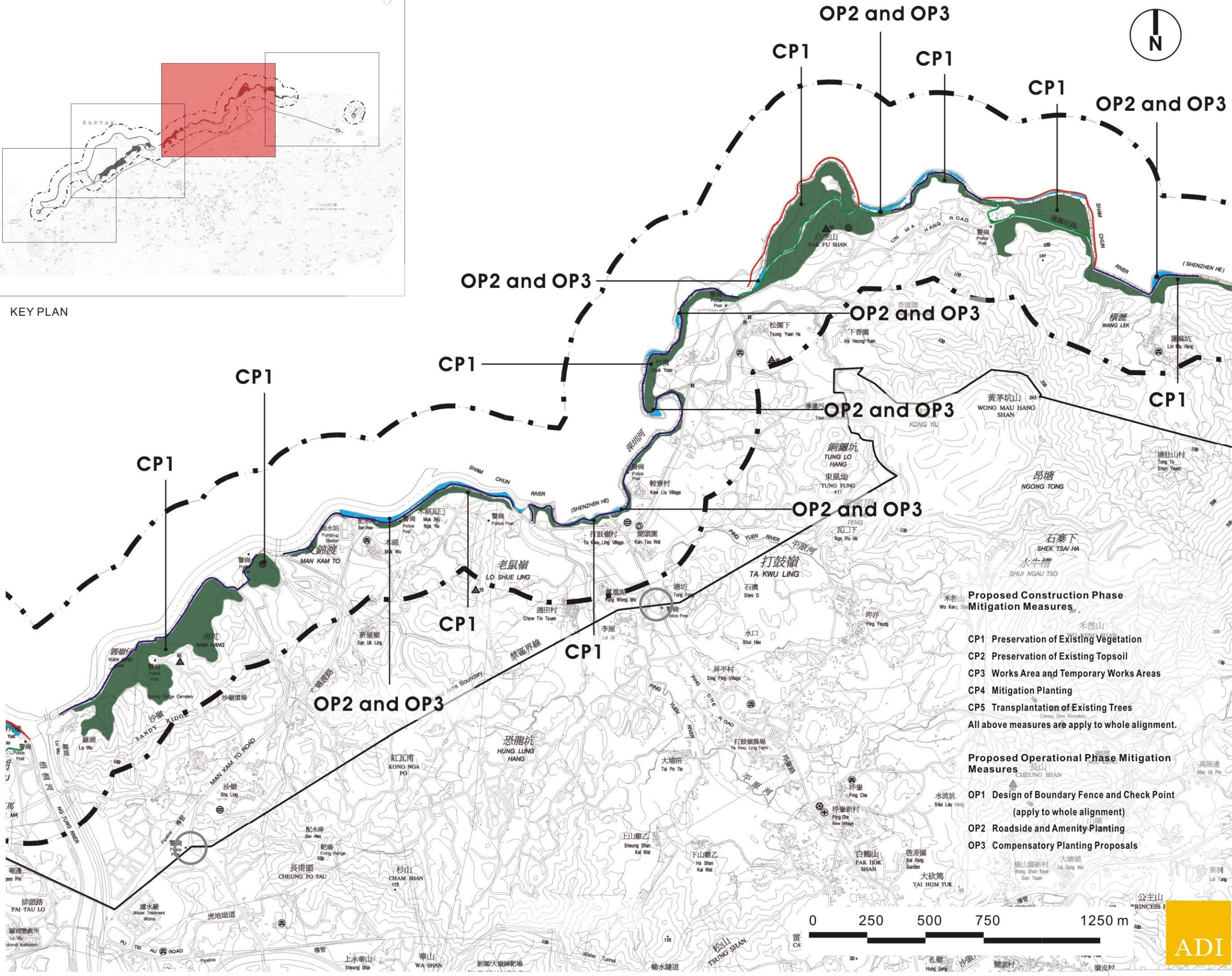
Scale	Project	Status
N.T.S.	216727	
Drawing No.	CAD File	

Figure 9-1B

This document should not be relied on or used in circumstances other than those for which it was originally prepared and for which Mott MacDonald Hong Kong Limited was commissioned. Mott MacDonald Hong Kong Limited accepts no responsibility for this document to any other party than the person by whom it was commissioned.



KEY PLAN



- ### Legend
- 500M Study Area
  - Frontier Closed Area
  - Proposed secondary boundary fence along existing boundary patrol road
  - Proposed new boundary patrol road with primary and secondary boundary fences
  - Existing boundary fence to be removed
  - Existing Mature Vegetation to be preserved
  - Potential Location for Compensatory and Screening Planting
  - Existing check point to be removed
  - Proposed new check point
  - Mitigation Code of Recommended Mitigation Measures

- ### Proposed Construction Phase Mitigation Measures
- CP1 Preservation of Existing Vegetation
  - CP2 Preservation of Existing Topsoil
  - CP3 Works Area and Temporary Works Areas
  - CP4 Mitigation Planting
  - CP5 Transplantation of Existing Trees
- All above measures are apply to whole alignment.

- ### Proposed Operational Phase Mitigation Measures
- OP1 Design of Boundary Fence and Check Point (apply to whole alignment)
  - OP2 Roadside and Amenity Planting
  - OP3 Compensatory Planting Proposals

Rev	Date	Drawn	Description	Ch'kd	App'd

Client: ARCHITECTURAL SERVICES DEPARTMENT

**Mott MacDonald**  
 Mott MacDonald Hong Kong Limited  
 7th Floor  
 West Wing Office Building  
 New World Centre  
 22 Salisbury Road  
 Hong Kong  
 Tel: 2828 5757  
 Fax: 2827 1823  
 Web: www.mottmac.com.hk

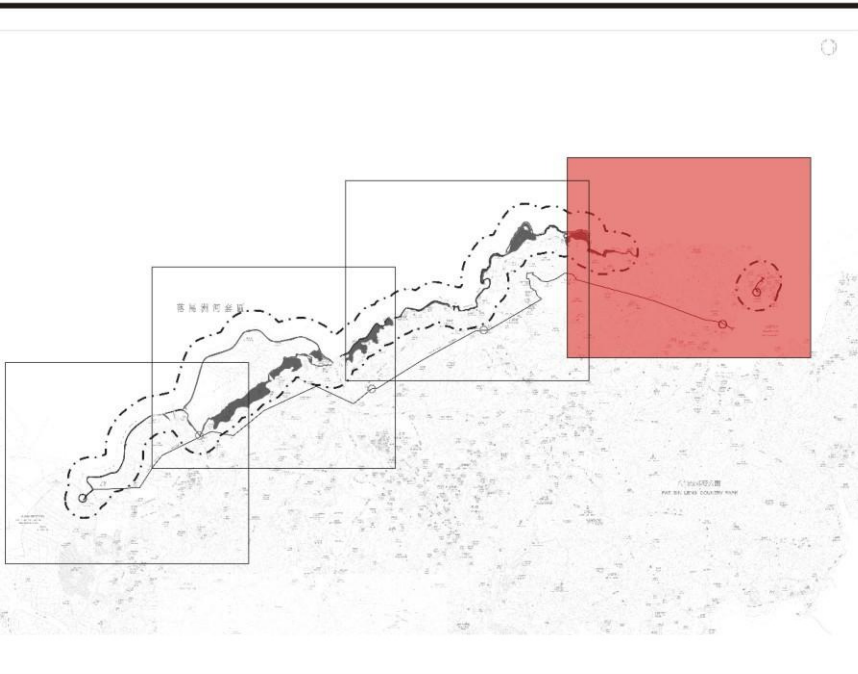
Project: CONSTRUCTION OF A SECONDARY BOUNDARY FENCE AND NEW SECTIONS OF PRIMARY BOUNDARY FENCE AND BOUNDARY PATROL ROAD

Title: Recommended Landscape Mitigation Measures

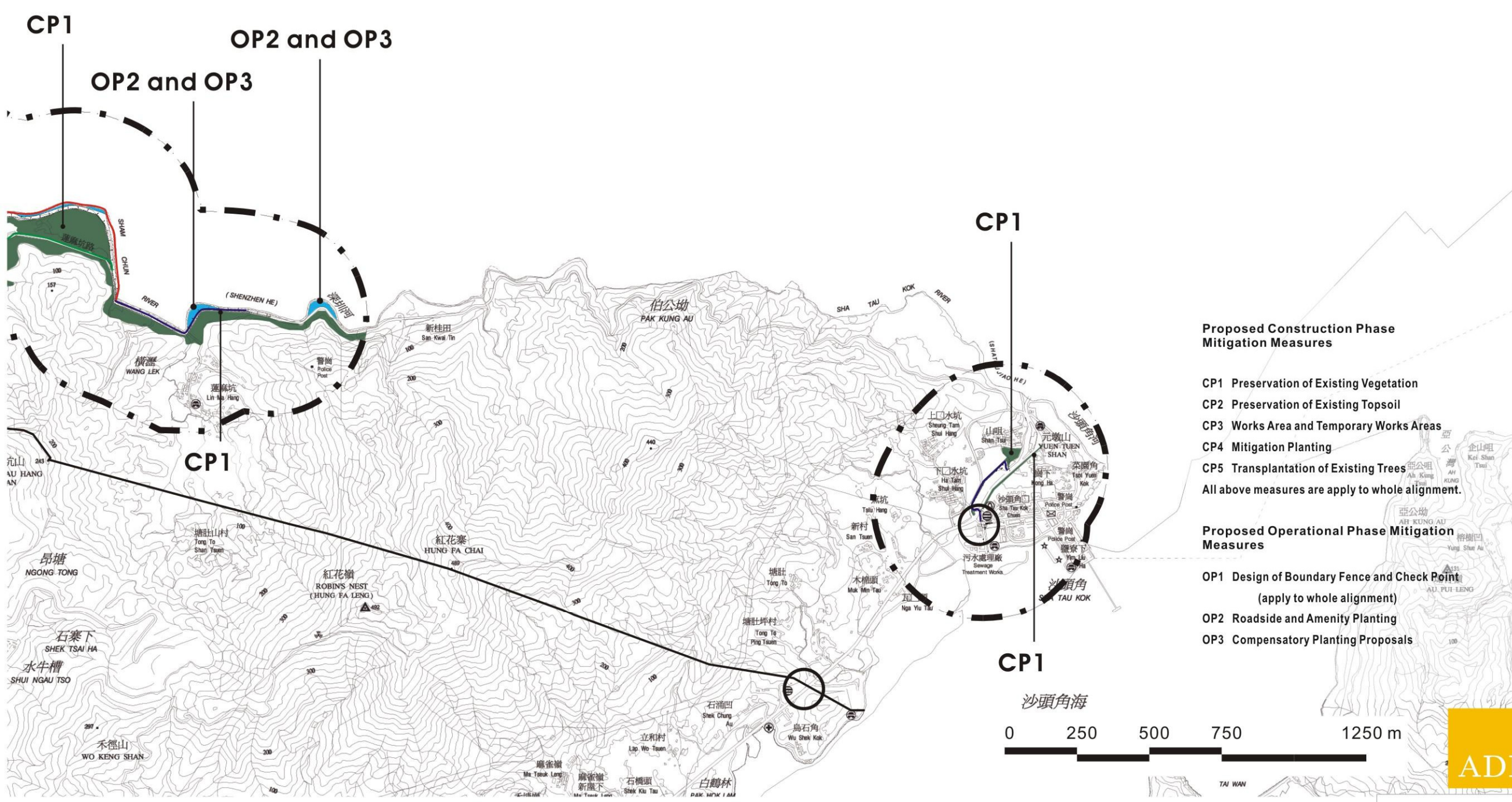
Designed	TEAM	Eng.Chk.	---
Drawn	EIK	Coordination	---
Dwg.Chk.	ELK	Approved	CJF
Scale	N.T.S.	Project	216727
Drawing No.	---	CAD File	---

This document should not be relied on or used in circumstances other than those for which it was originally prepared and for which Mott MacDonald Hong Kong Limited was commissioned. Mott MacDonald Hong Kong Limited accepts no responsibility for this document to any other party than the person by whom it was commissioned.

Figure 9-1C



KEY PLAN



**Proposed Construction Phase Mitigation Measures**

- CP1 Preservation of Existing Vegetation
  - CP2 Preservation of Existing Topsoil
  - CP3 Works Area and Temporary Works Areas
  - CP4 Mitigation Planting
  - CP5 Transplantation of Existing Trees
- All above measures are apply to whole alignment.

**Proposed Operational Phase Mitigation Measures**

- OP1 Design of Boundary Fence and Check Point (apply to whole alignment)
- OP2 Roadside and Amenity Planting
- OP3 Compensatory Planting Proposals



**Legend**

- 500M Study Area
- Frontier Closed Area
- Proposed secondary boundary fence along existing boundary patrol road
- Proposed new boundary patrol road with primary and secondary boundary fences
- Existing boundary fence to be removed
- Existing check point to be removed
- Proposed new check point
- Existing Mature Vegetation to be preserved
- Potential Location for Compensatory and Screening Planting
- CP1** Mitigation Code of Recommended Mitigation Measures

Rev	Date	Drawn	Description	Ch'k'd	App'd
Client					



**Mott MacDonald**  
 Mott MacDonald Hong Kong Limited  
 7th Floor  
 West Wing Office Building  
 New World Centre  
 22 Salisbury Road  
 Hong Kong  
 Tel: 2828 5757  
 Fax: 2827 1823  
 Web: www.mottmac.com.hk

Project  
 CONSTRUCTION OF A SECONDARY BOUNDARY FENCE AND NEW SECTIONS OF PRIMARY BOUNDARY FENCE AND BOUNDARY PATROL ROAD

Title  
 Recommended Landscape Mitigation Measures

Designed	TEAM	Eng.Chk.	---
Drawn	EIK	Coordination	---
Dwg.Chk.	ELK	Approved	CJF
Scale	N.T.S.	Project	216727
		CAD File	---
Drawing No.		Status	
		Rev	

This document should not be relied on or used in circumstances other than those for which it was originally prepared and for which Mott MacDonald Hong Kong Limited was commissioned. Mott MacDonald Hong Kong Limited accepts no responsibility for this document to any other party than the person by whom it was commissioned.